

Wall-Hung Water Closet – Handicapped

PRODUCT FEATURES

- Wall hung toilet can be paired with Rigel concealed cistern or concealed box flush valve system
- BCA handicapped toilet compliant

FLUSHING TYPE

- Wash down

PRODUCT SPECIFICATIONS

- Dimension : 755 (L) x 385 (W) x 415 (H) mm
- Inlet : Back Inlet
- Material : Vitreous China
- Trap Seal : 50mm minimum
- Minimum Water Pressure : 135 kPa
- Seat and Cover : FT-SC7030US (Urea)



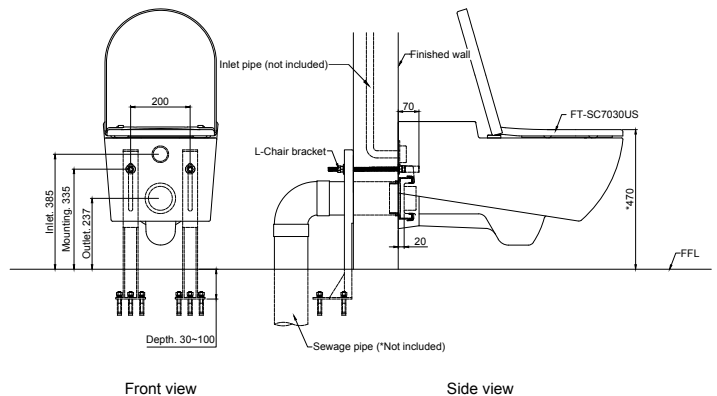
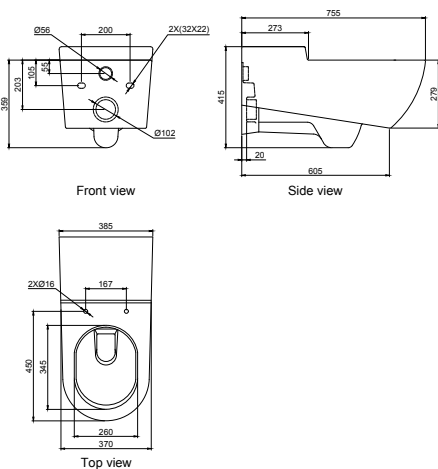
OPTIONAL FEATURE:



RiNano
Technology

TECHNICAL DRAWING

INSTALLATION DETAILS



Handicapped (*) - 450-480 from FFL to the top of the WC seat.
750 from the front edge of the WC to the rear wall.

All dimension are in mm.
Use template for positioning.